

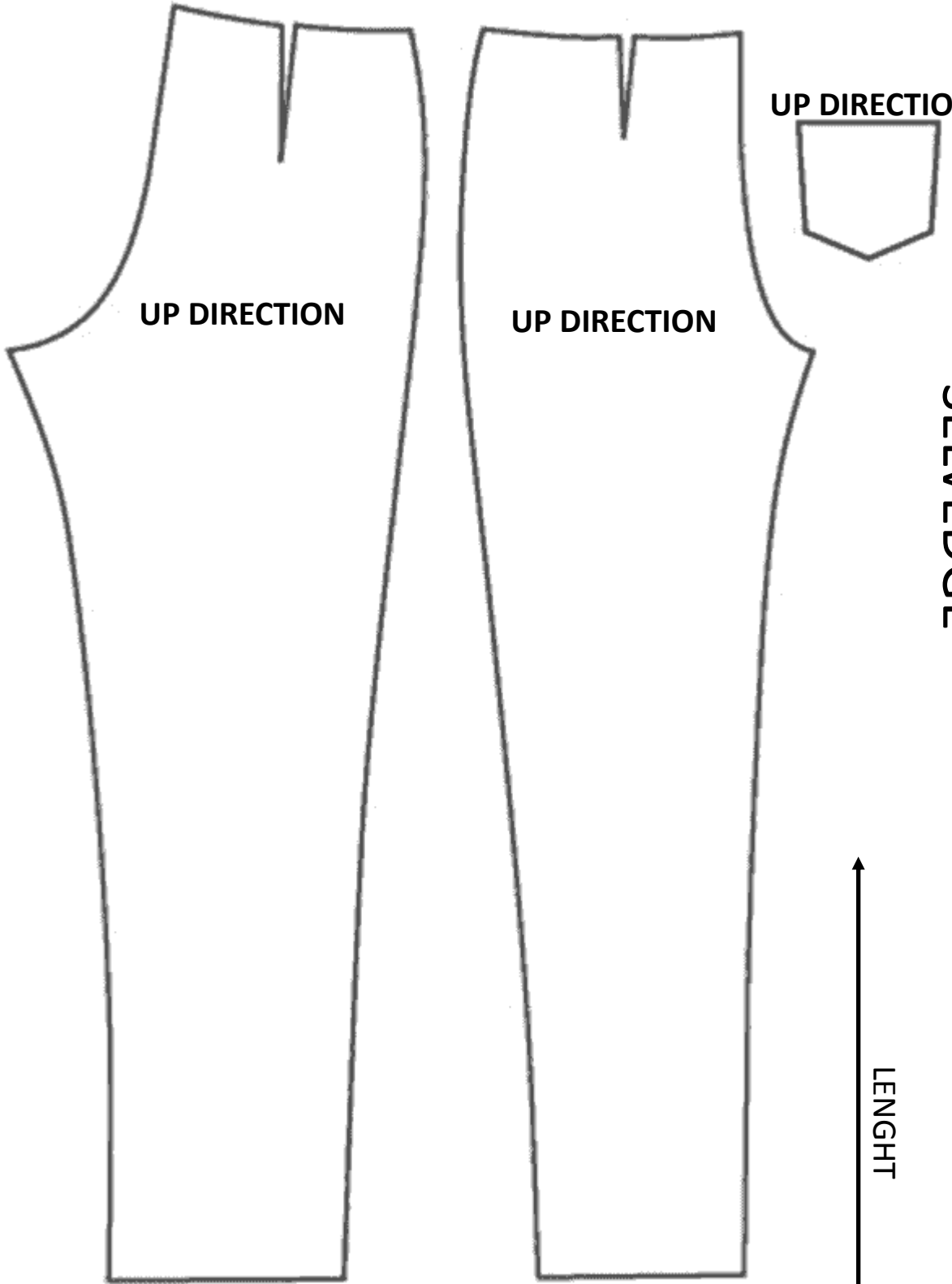
# CUTTING PLAN INSTRUCTIONS

**PTWG**

**Sensitive® Sculpt Bold**

To avoid any shading issue, we recommend to strictly refer to the correct cutting instructions below always cut following the same fabric knit direction i.e not mixing up length/width and up/down direction while cutting the different parts of the garment.

WIDTH



UP DIRECTION

UP DIRECTION

UP DIRECTION



SELVEDGE

SELVEDGE

LENGHT



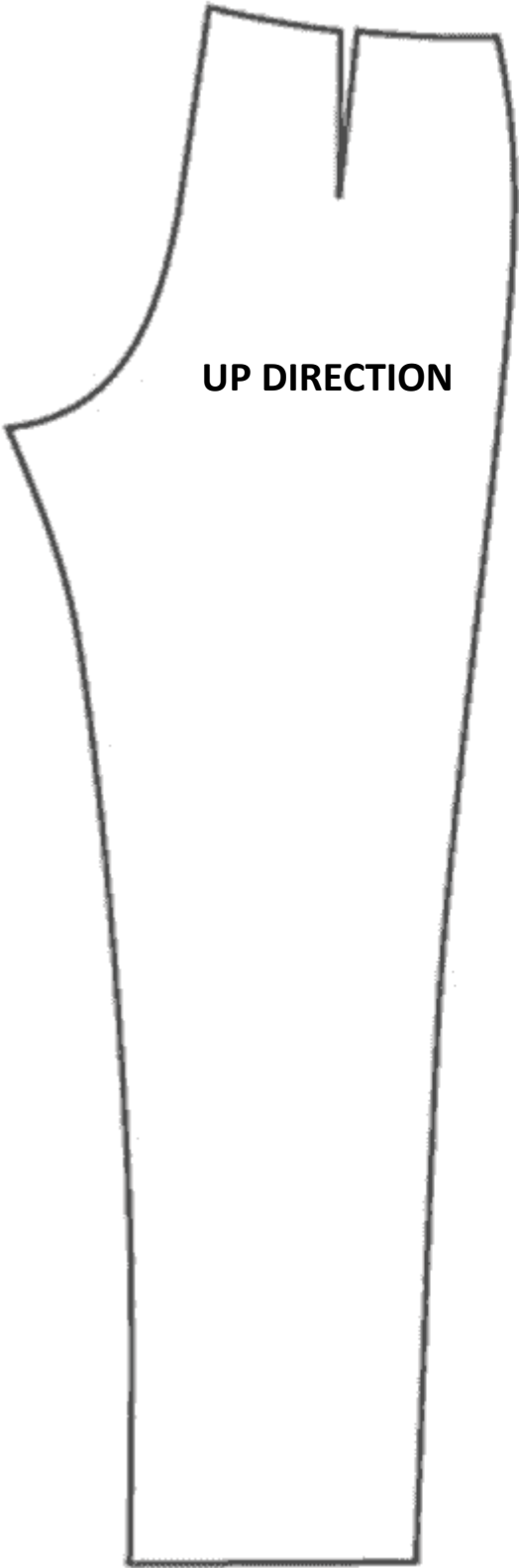
**CORRECT**

WIDTH



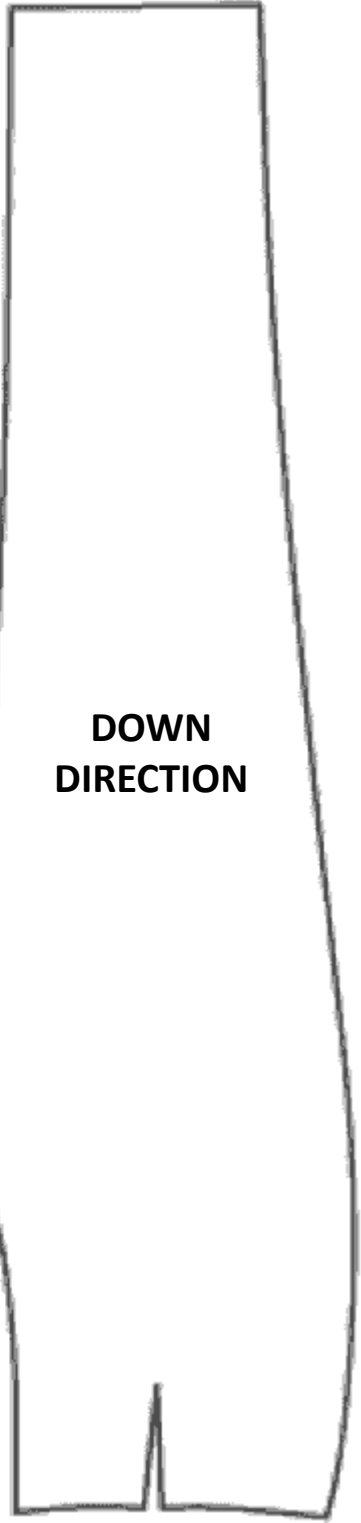
UP DIRECTION

SELVEDGE

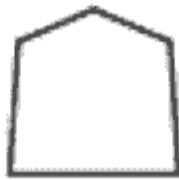


DOWN DIRECTION

SELVEDGE



DOWN DIRECTION



LENGHT



**WRONG**



WIDTH



UP DIRECTION



UP DIRECTION

DOWN  
DIRECTION

SELVEDGE

SELVEDGE

LENGHT



**WRONG**

# Example: Pant in PTWG Sensitive® Sculpt Bold col.518

