

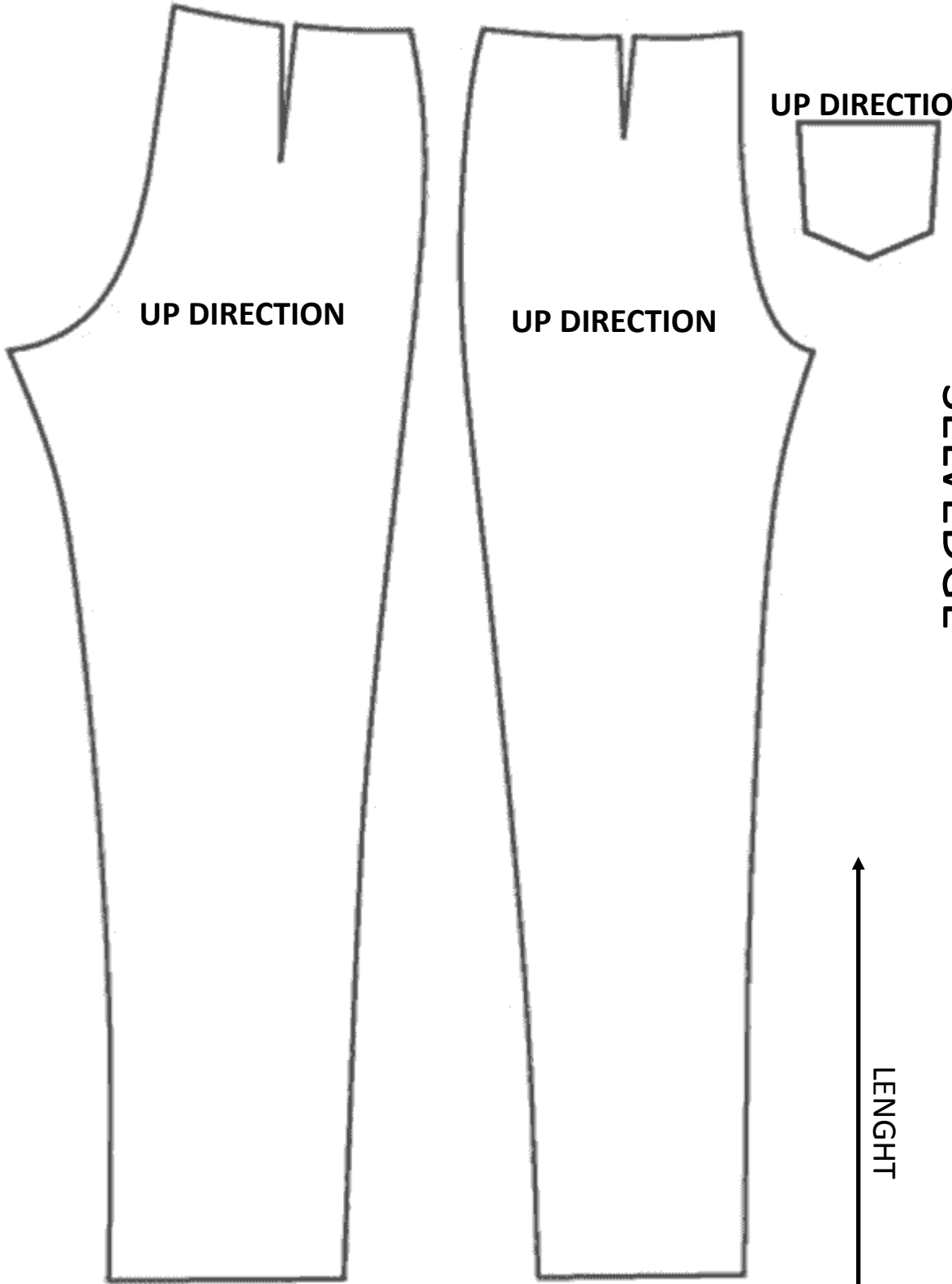
CUTTING PLAN INSTRUCTIONS

FCAQ

Sensitive Power EVO

To avoid any shading issue, we recommend to strictly refer to the correct cutting instructions below always cut following the same fabric knit direction i.e not mixing up length/width and up/down direction while cutting the different parts of the garment.

WIDTH



UP DIRECTION

UP DIRECTION

UP DIRECTION



SELVEDGE

SELVEDGE

LENGHT



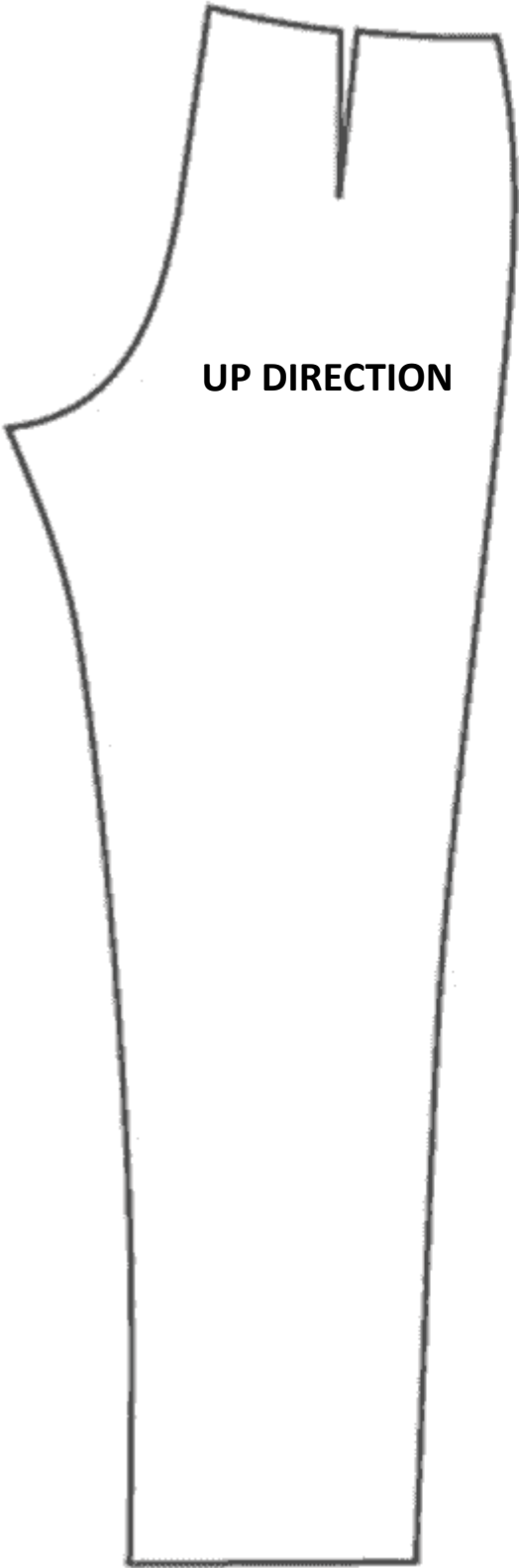
CORRECT

WIDTH



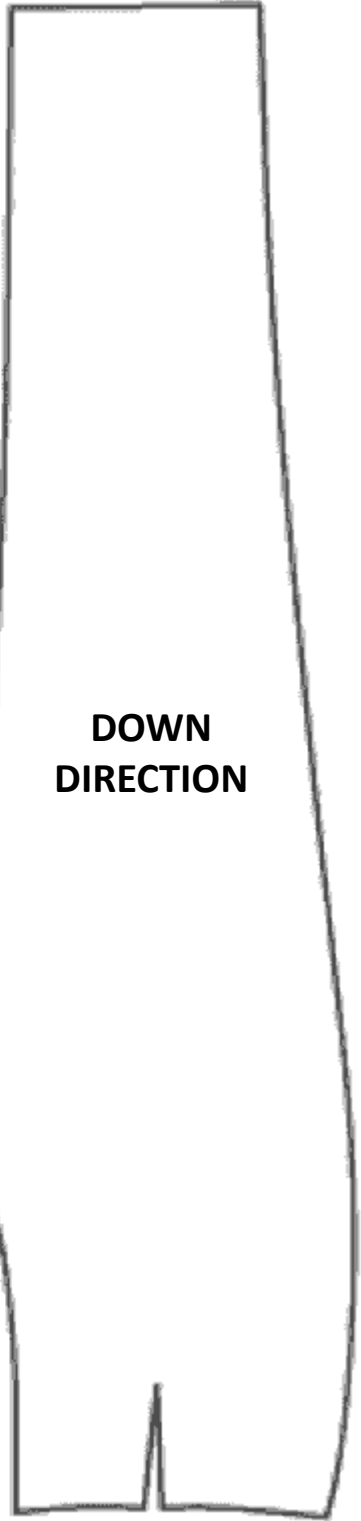
UP DIRECTION

SELVEDGE



DOWN DIRECTION

SELVEDGE



DOWN DIRECTION

LENGHT



WRONG

WIDTH



UP DIRECTION



UP DIRECTION

DOWN
DIRECTION

SELVEDGE

SELVEDGE

LENGHT



WRONG

Example: Pant in FCAQ Sensitive Power Evo col.518

